

# BANDALUX

← → **INDOOR & OUTDOOR  
INSTALLATION**



## Q-CASSETTE® 2

Elegance and contemporary design are what define the Q-Cassette® 2 from Bandalux. Made of durable, highly resistant materials with a premium finish that make our Q-Cassette® 2 suitable for indoor or outdoor applications.



### AVAILABLE COMPONENT COLORS



Anodized



Black



Dark Brown



Grey



Ivory



White

### OPERATING SYSTEM



Chain



Motor

#### MAXIMUM WIDTH

86" x 47"

#### MAXIMUM HEIGHT

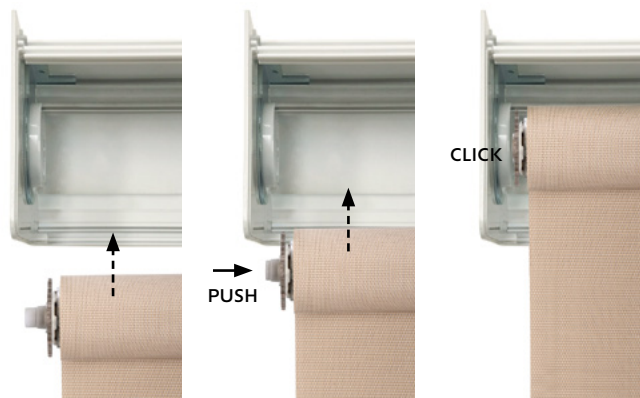
55" x 110"

ⓘ Check 'Fabric Limits' in ProArea.

# BOX SYSTEMS - Q-CASSETTE® 2

## Strong and simple mounting

Bandalux has developed stronger idle ends to deliver benchmark endurance and reliability. It contains a solid system with high quality bearings that provides a perfect, smooth and silent (motion) rotation. It can be easily set up by a simple one hand move thanks to its internal compression spring.



## Smoother and silent motorization

All Bandalux motorization products include a brand new, hybrid technology driving wheel specifically designed by us to minimize noise and vibration.



## Two shades, one operating system

Bandalux's new transmission delivers enhanced smoothness enabling two rolling tubes to operate with just one operating system. New bearings have been added to the mechanism to provide silent and perfect, concentric movement.

Height deviations may appear. These deviations are established according to EN13120 standard:  $\pm 3\%$  for each fabric. Maximum height deviation between two fabrics being  $\pm 6\%$



---

## Easy installation

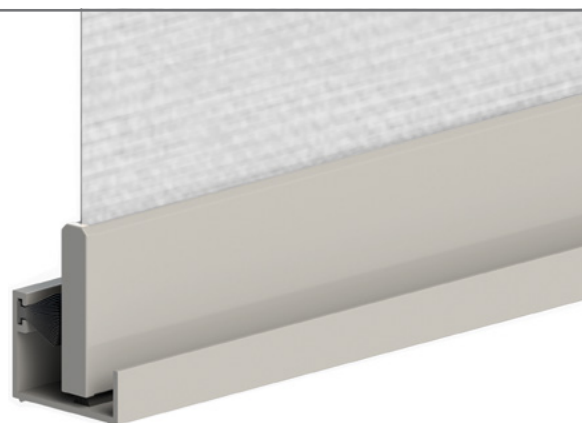
Both for ceiling and wall, the systems have been engineered to ensure a secure yet simple installation for indoor and outdoor applications. Both the Click-On brackets and the reinforced outdoor Slide-On brackets can be used for mounting on conditions that require either ceiling or front-wall installation. All while maintaining its aesthetic design.



---

## Perimeter closure with a sill channel

For fully concealed systems, a profile is integrated to the base where the fabric lays to ensure a perimeter closure of the entire system in which the shade is integrated, reducing light leakage.



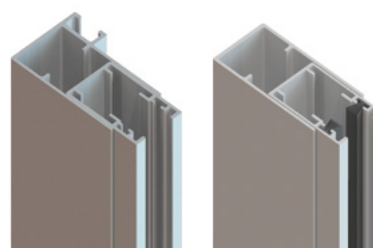
---

## Optimal guide systems

### Aluminum side channels

Engineered to work with semi-opaque systems. The external channel adapts to uneven wall surfaces and the interior channel adapts to the fabric.

R2 telescopic



# BOX SYSTEMS - Q-CASSETTE® 2

## Safety protection for children

In compliance with the updated child safety standard (ANSI/WCMA A100.1-2022), Bandalux supplies an improved Chain/Cord Tension Device by default.

This device is designed to eliminate free hanging cords and connectors in order to be fully tensioned and fixed to the wall with the aim of preventing children from getting entangled in it.

### Features of the new Child Safety Device:

- Easy device assembly.
- Quick installation.
- Smooth and reliable performance.



## Even the smallest details are considered

### Component color combination

Bandalux combines its style with all the system components to deliver best in class products.



### Bottom hembar wide assortment

Bottom hembars become a differential element:

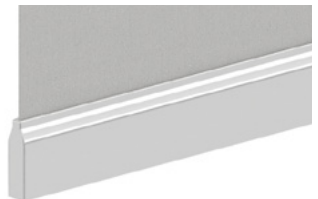
Mini Plain (included by default)



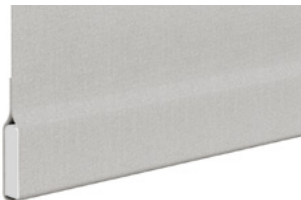
Slim 35



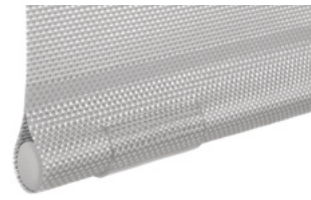
Euroslim



Mini Plain fabric wrap

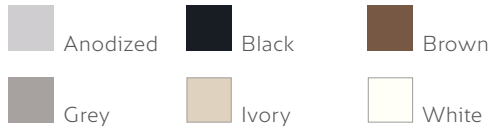


Round fabric wrap (ø3/4", ø13/16")



### Standard configuration

#### Colors



❗ By default, Bandalux will provide the Q-Cassette® 2 in white unless a different color is indicated on the order form or eBa.

#### Chain operated



#### Mini Plain bottom hembar



#### Chain Tension Device



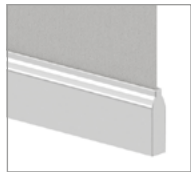
### Optional configuration

#### BOTTOM HEMBARS

##### Slim 35



##### Euroslim

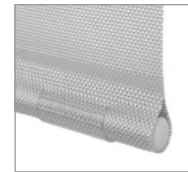


##### Mini Plain fabric wrap



❗ Only available for free drop.

##### ø<sup>3</sup>/<sub>4</sub>" and ø<sup>1</sup>/<sub>16</sub>" Round fabric wrap



### Optional configuration



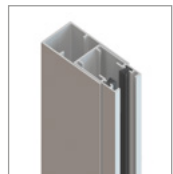
#### Metallic chain



#### Profile special color

❗ Customized hardware colors available upon request. RAL number must be indicated.

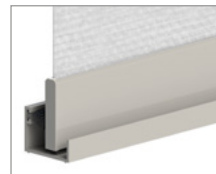
### Aluminum side channels (indoor installation)



#### R2 Telescopic lateral



❗ Only compatible with Mini Plain and Euroslim bottom hembars. / Maximum height: 137".



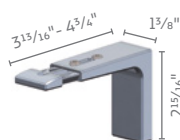
#### Sill bottom for R2 Telescopic channel

### Additional brackets

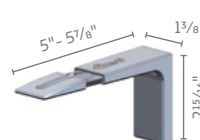
#### Wall/Ceiling indoor installation



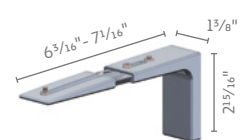
#### 3<sup>13</sup>/<sub>16</sub>" - 4<sup>3</sup>/<sub>4</sub>" telescopic reinforced bracket



#### 5" - 5<sup>7</sup>/<sub>8</sub>" telescopic reinforced bracket



#### 6<sup>3</sup>/<sub>16</sub>" - 7<sup>1</sup>/<sub>16</sub>" telescopic reinforced bracket



# BOX SYSTEMS - Q-CASSETTE® 2

## OPTIONS

### Operating system options

MOTOR <sup>(1)</sup>				ACCESSORIES					
				Single channel remote control	Multi channel remote control	Wirefree wall switch	Charger for battery motors	Battery motor cable extender	Wifi RTS interface
LOW VOLTAGE RADIO	Bandalux <sup>(4)</sup>	RADIO BI 25 1.1/40 Built-in transformer	24Vdc	1 CH Ref. 06701100B	15 CH Ref. 06701110B	15 CH Ref. 06701180B	--	--	--
		RADIO BI 28 2/28 <sup>(5)</sup> Built-in transformer	24Vdc						
	Somfy® RTS <sup>(4)</sup>	R28 Battery pack	12Vdc	Situo 1 Ref. 06700604C	Situo 5 Ref. 06700606C	RTS 5 CH Ref. 06705020	--	--	Tahoma Ref. 06700660U
		SONESSE 30 2/28 <sup>(3)(5)</sup> Transformer included	24Vdc						
LOW VOLTAGE RECHARGEABLE BATTERY <sup>(2)</sup>	Somfy® RTS <sup>(4)</sup>	SONESSE 30 RECHARGEABLE 2/28 WF <sup>(3)(5)</sup>	12Vdc	Situo 1 Ref. 06700604C	Situo 5 Ref. 06700606C	RTS 5 CH Ref. 06705020	Charger Ref. 05499582	Cable ext. 96" Ref. 05499583	Tahoma Ref. 06700660U
		RECHARGEABLE R28 WF	12Vdc						
	Rollease Automate <sup>(4)</sup>	LI-ION 25 1.1	12Vdc	1 CH Ref. 05499930	15 CH Ref. 05499935	5 CH Ref. 05499990	Charger Ref. 05499920	Cable ext. 96" Ref. 05499921	Pulse Hub Ref. 05499971
		LI-ION 28 2.0 <sup>(3)</sup>	12Vdc						
	Bandalux <sup>(4)</sup>	RECHARGEABLE BI 25 1.1/40	12Vdc	1 CH Ref. 06701100B	15 CH Ref. 06701110B	15 CH Ref. 06701180B	Charger Ref. 06701210	Cable ext. 8FT Ref. 06701250	--
		RECHARGEABLE BI 28 2/28 <sup>(3)</sup>	12Vdc						
	Vertilux <sup>(4)</sup>	RECHARGEABLE 38 1.2/30	7.4Vdc	1 CH Ref. 18510110B	6 CH Ref. 18510120B	6 CH Ref. 18500150	Charger Ref. 05499411	--	VTi Smart Hub Ref. 12132001
		RECHARGEABLE 38 1.8/30 <sup>(3)</sup>	7.4Vdc						

❶ (1) To guarantee a proper functionality Bandalux will provide the appropriate motor model according to the shade size. / (2) Price for RECHARGEABLE battery motors includes 1 charger and 1 cable extender per order. / (3) Maximum height: 50". / (4) Motor only compatible for indoor installation. / (5) Please refer to your sales representative for Bandalux motor delivery deadlines.

### Two shades



**Two shades with 2 operating systems**  
Price of 2 shades and 2 operating systems

❶ The maximum width for each shade will be the same as the one established in FABRIC LIMITS book (maximum combined width: 236").



**Two shades with 1 operating system (transmission)**  
Price of 2 shades and 1 operating system

❶ Chain-operated: the maximum width for both shades cannot exceed the maximum width of a single shade according to FABRIC LIMITS book (maximum combined width: 236").  
Motor-operated: the maximum width for the controls side shade cannot exceed the maximum width of a single motor-operated shade according to FABRIC LIMITS book; the maximum width for opposite side shade cannot exceed the maximum width of a single chain-operated shade according to FABRIC LIMITS book; (maximum combined width: 236").

### Other options



**Fabric customization**  
Check 'Digital Printing' rate



# BOX SYSTEMS - Q-CASSETTE® 2

## TECHNICAL DATA

### Operating systems and minimum shade width

Operating system	Motor Name	Sound level (dBA)	Ø (mm)	Nm	r.p.m.	IP	Requires charger / transformer	Motor Vdc/Vac	Minimum shade width
CHAIN	--	--	--	--	--	--	--	--	8"
SOMFY® <sup>(1)</sup>	R28	48-56	25	1.1	28	20	No	12 Vdc	18'
	RECHARGEABLE R28 WF	N/I/A	25	1.1	28	20	Yes	12 Vdc	27"
	SONESSE 30 2/28 <sup>(1)</sup>	44	30	2	6/28	30	No	24 Vdc	20"
	SONESSE 30 RECHARGEABLE 2/28 WF <sup>(1)</sup>	44	30	2	10/28	20	Yes	12 Vdc	28"
	SONESSE 40 4/36 <sup>(1)</sup>	42	40	4	36	44	No	120 Vac	--
	SONESSE 40 RECHARGEABLE 3/28 WF <sup>(1)</sup>	44	40	3	10/28	30	Yes	12 Vdc	--
	SONESSE 50 6/32 <sup>(1)</sup>	≤44	50	6	32	31	No	120 Vac	--
	SONESSE 50 10/32 <sup>(1)</sup>	≤45	50	10	32	44	No	120 Vac	--
	ULTRA QUIET 50 6/24	≤38	50	6	24	31	No	120 Vac	--
ROLLEASE AUTOMATE <sup>(1)</sup>	LI-ION 25 1.1	46	25	1.1	40/30/20	44	Yes	12 Vdc	24"
	LI-ION 28 2.0	44	30	2	28/24/20	44	Yes	12 Vdc	30"
	LI-ION 40 3.0	53	35	3	28/24/20	44	Yes	12 Vdc	--
	LI-ION 50 3.0	40	45	3	28/24/20	44	Yes	12 Vdc	--
	LI-ION 50 10.0	42	45	10	9/8/6	44	Yes	12 Vdc	--
BANDALUX <sup>(1)</sup>	RADIO BI 25 1.1/40	46	25	1.1	40/30/20	44	No	24 Vdc	24"
	RADIO BI 28 2/28	44	28	2	28/24/20	44	No	24 Vdc	31"
	RECHARGEABLE BI 25 1.1/40	46	25	1.1	40/30/20	44	Yes	12 Vdc	26"
	RECHARGEABLE BI 28 2/28	44	28	2	28/24/20	44	Yes	12 Vdc	31"
	RECHARGEABLE BI 40 3/28	53	40	3	28/24/20	44	Yes	12 Vdc	--
	RECHARGEABLE BI 50 3/28	40	50	3	28/24/20	44	Yes	12 Vdc	--
	RECHARGEABLE BI 50 10/9	42	50	10	9/8/6	44	Yes	12 Vdc	--
VERTILUX <sup>(1)</sup>	RECHARGEABLE 38 1.2/30	N/I/A	38	1.2	30	N/I/A	Yes	7.4 Vdc	22"
	RECHARGEABLE 38 1.8/30	N/I/A	38	1.8	30	N/I/A	Yes	7.4 Vdc	27"
	RECHARGEABLE 40 6/18	N/I/A	35	6	18	N/I/A	Yes	12 Vdc	--
	QUIET 40 6/33	N/I/A	40	6	33	44	No	120 Vac	--
	ULTRA QUIET 50 6/28	N/I/A	50	6	28	N/I/A	No	120 Vac	--

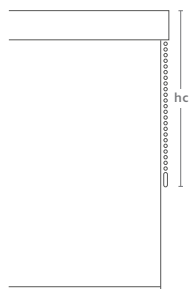
❶ For measurements 77/8"-153/4" wide, maximum height 591/16" without guiding. Side guides needed for larger heights. / To guarantee proper functioning, Bandalux will provide the appropriate motor model according to the shade size. / N/I/A: No info available. / (1) Motor only compatible for indoor installation.

# BOX SYSTEMS - Q-CASSETTE® 2

## TECHNICAL DATA

### Controls height

#### CHAIN

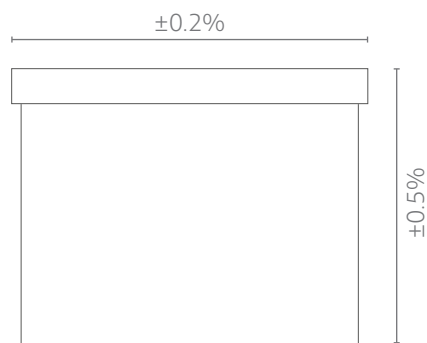


Minimum calculation for  
hc:  $H \times 0.90$

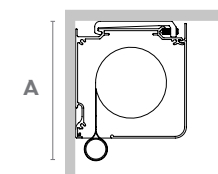
Estimate example	
Shade height <b>H</b>	Controls height <b>hc</b>
40"	36"
80"	72"
160"	144"


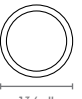
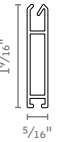

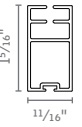
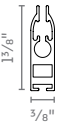
❶ The controls height will always be measured from the highest part of the shade (bracket upper part) to the lowest part of the operating system.

### Production tolerance



### Bottom hembars and retraction heights



	HIDDEN BOTTOM HEMBARS			VISIBLE BOTTOM HEMBARS		
						
	ø3/4" Round fabric wrap	ø1 3/16" Round fabric wrap	Mini Plain fabric wrap	Mini Plain	Slim 35	Euroslim
	A	A	A	A	A	A
Q-CASSETTE® 2 <sup>(1)</sup>	3 3/16"	3 9/16"	3 15/16"	3 15/16"	3 3/4"	3 3/4"
WITHOUT SIDE GUIDES	✓	✓	✓	✗	✓	✓
WITH CABLE GUIDE	✓	✓	✗	✗	✓	✗
WITH R2 TELESCOPIC CHANNEL <sup>(2)</sup>	✗	✗	✗	✓	✗	✗

❶ (1) Data for inner bracket.



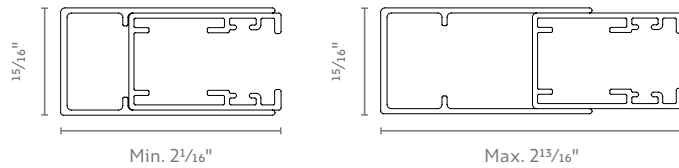
# BOX SYSTEMS - Q-CASSETTE® 2

## TECHNICAL DATA

### Side guide sizes

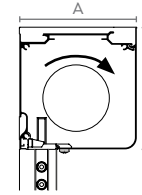
#### ALUMINUM SIDE CHANNEL (indoor installation)

##### R2 Telescopic lateral

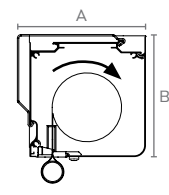


### Box system sizes

#### NORMAL ROLLING DIRECTION



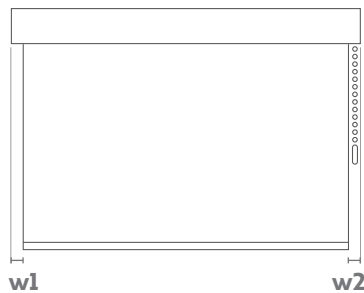
Self-supporting



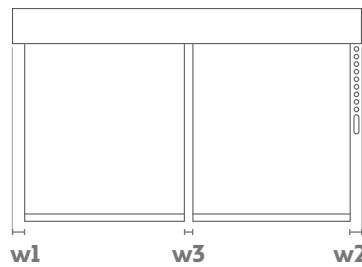
Wall / Ceiling indoor bracket

A	B	A	B
2 5/16"	2 3/8"	2 9/16"	2 3/8"

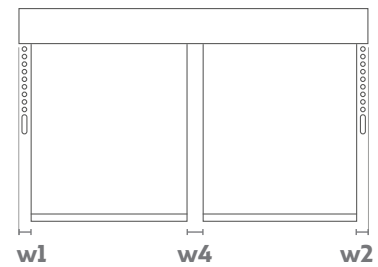
### Space between bracket and fabric (GAP)



One shade with  
1 operating system



Two shades with  
1 operating system



Two shades with  
2 operating systems

#### without side guides

	w1	w2	w3	w4
CHAIN	7/8"	1 1/16"	1 1/8"	1 9/16"
12Vdc MOTOR	7/8"	3/4"	1 1/8"	1 9/16"
24Vdc MOTOR	7/8"	3/4"	1 1/8"	1 9/16"

# **BANDALUX**