

ONE BOX

As part of its innovative spirit and commitment to continuously explore new solutions, Bandalux has developed One Box, a concealed system designed to strengthen the company's connection with architects and interior designers. This solution allows for the future installation of solar control systems, creating bright, minimalist spaces. With One Box, the entire system is hidden within a ceiling recess, formed by combining profiles that accommodate various configurations. One Box is compatible with Bandalux roller shades and Venetian blinds, available in both manual and motorized options.

PROFILE COLORS



Matt White Lacquered
(30% gloss)

MEASUREMENTS

19,69 ft meter profiles



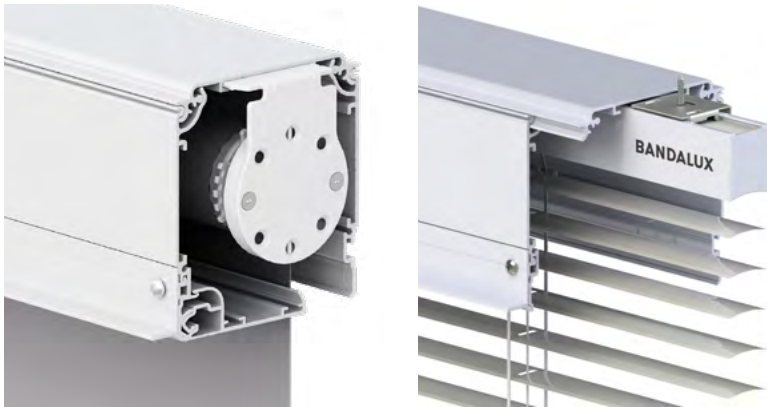
ONE BOX

Total system concealment

This system allows the shade to be completely hidden from view when rolled up, fitting seamlessly into the ceiling (including the bottom hembar). The shade emerges from the ceiling, with the exception of larger-sized shades.



100% Bandalux system compatibility



One Box has been designed for compatibility with Bandalux roller shades –supporting maximum dimensions similar to the B-Box 100 shade system– as well as Venetian blinds.

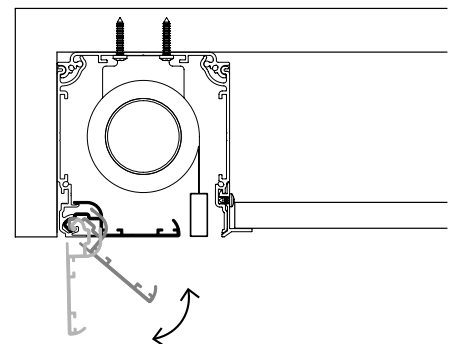
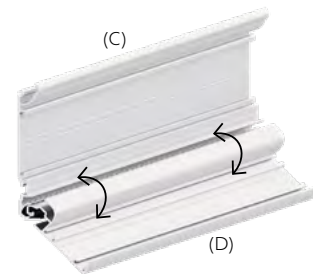
When ordering Bandalux shades for installation with the One Box system, special brackets specifically developed for this solution will be provided.

New patented double-support clipping system

The new double-support clipping system for One Box, developed and patented by Bandalux, enhances access to the shade. With a wider opening range, the system allows for easier and more efficient handling, simplifying both installation and maintenance.

This upgrade affects the side closing profile (C) and the bottom closing profile (D), which have been modified in configurations 1, 2 and 3.

The bottom closing profile also serves as a hanger, enabling easy access to the shade or blind without requiring full system disassembly, thus preventing potential damage from improper handling.



Easy installation of Bandalux Roller Shades

The specially designed brackets for this system are easily installed with a simple twist into the guided rail of the aluminum One Box top profile.

The guided rail is integrated into both the top and side profiles, allowing the shade to be mounted on either the ceiling or the wall.



The shade fabric roll can be quickly installed onto the custom brackets without any rotation required.

Retractable end pins facilitate this assembly, using a compression-based stem mechanism.



Easy installation of Venetian blinds

The specially designed brackets for Venetian blinds are mounted directly onto the top profile of the One Box aluminum system, compatible with both Omega and Signum Venetian blinds.

Brackets for Omega Venetian

Bracket for Signum Venetian

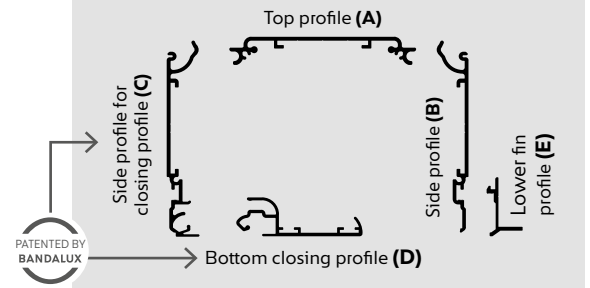
CHAIN

MOTOR

CHAIN AND MOTOR



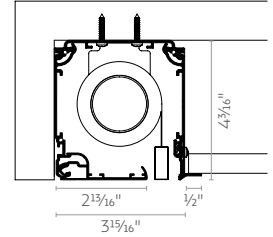
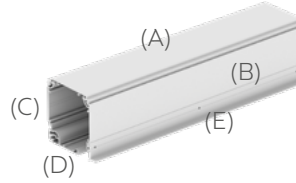
ONE BOX SETTINGS



1

Contains the profiles:

- Top profile (A)
- Side profile (B)
- Side profile for closing profile (C)
- Bottom closing profile (D)
- Lower fin profile (E)⁽¹⁾

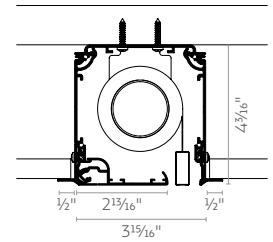
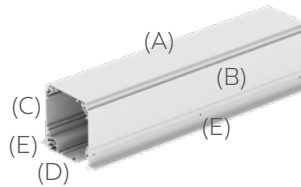


❶ (1) Lower fin profile will be served with DIN 7981 ZINC 1/8"x1/4" screws Ref. 11403157 (1 screw every 1,64 ft of profile). / (2) Served in 19,69 ft profile bars. / (3) The profiles will be invoiced in complete 19,69 ft pieces and all the material will be shipped, including the excess.

2

Contains the profiles:

- Top profile (A)
- Side profile (B)
- Side profile for closing profile (C)
- Bottom closing profile (D)
- Lower fin profile (E) - 2 units -⁽¹⁾

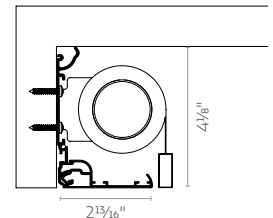
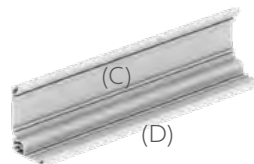


❶ (1) Lower fin profile will be served with DIN 7981 ZINC 1/8"x1/4" screws Ref. 11403157 (1 screw every 1,64 ft of profile). / (2) Served in 19,69 ft profile bars. / (3) The profiles will be invoiced in complete 19,69 ft pieces and all the material will be shipped, including the excess.

3

Contains the profiles:

- Side profile for closing profile (C)
- Bottom closing profile (D)



❶ (1) Served in 19,69 ft profile bars. / (2) The profiles will be invoiced in complete 19,69 ft pieces and all the material will be shipped, including the excess.

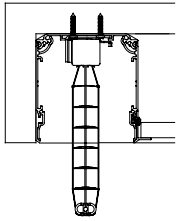
ONE BOX SETTINGS

4

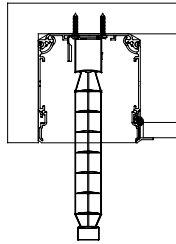
Contains the profiles:

- Top profile (A)
- Side profile (B) - 2 units -
- Lower fin profile (E)⁽¹⁾

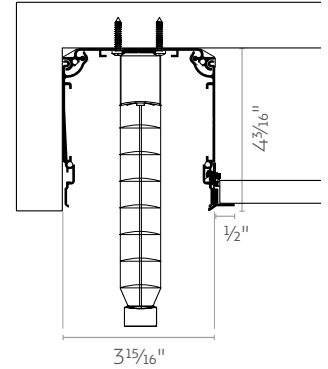
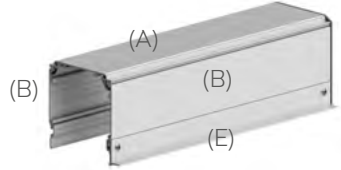
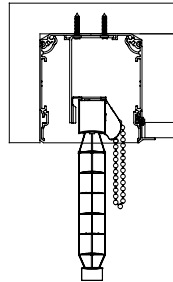
Signum chain and motor



Omega motor



Omega chain



① The stacking height will depend on the height of the blind.

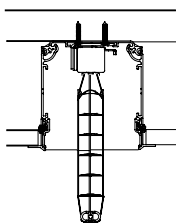
① (1) Lower fin profile will be served with DIN 7981 ZINC 1/8"x1/4" screws Ref. 11403157 (1 screw every 1,64 ft of profile). / (2) Served in 19,69 ft profile bars. / (3) The profiles will be invoiced in complete 19,69 ft pieces and all the material will be shipped, including the excess.

5

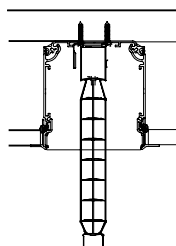
Contains the profiles:

- Top profile (A)
- Side profile (B) - 2 units -
- Lower fin profile (E) - 2 units - ⁽¹⁾

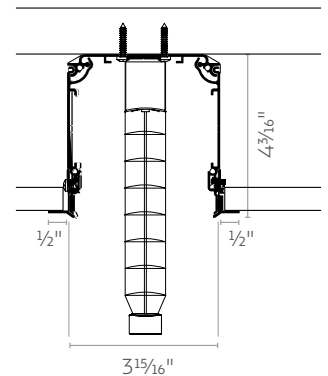
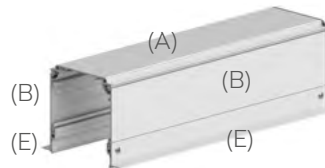
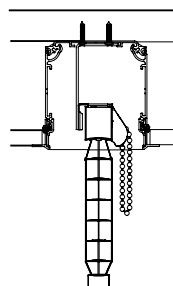
Signum chain and motor



Omega motor



Omega chain



① The stacking height will depend on the height of the blind.

① (1) Lower fin profile will be served with DIN 7981 ZINC 1/8"x1/4" screws Ref. 11403157 (1 screw every 1,64 ft of profile). / (2) Served in 19,69 ft profile bars. / (3) The profiles will be invoiced in complete 19,69 ft pieces and all the material will be shipped, including the excess.

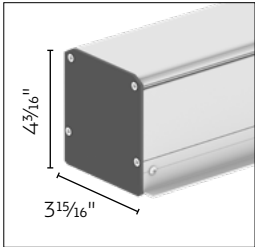
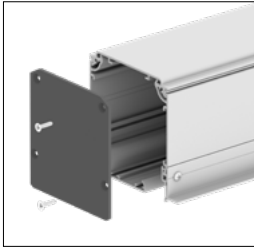
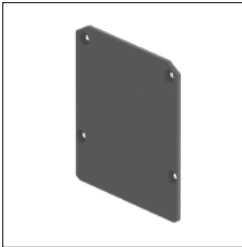
ONE BOX

ACCESSORIES

One Box closing side cover

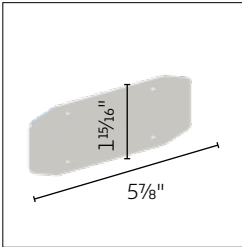
The closing side covers will be served with 1/8"x3/4" DIN7504-P INOX screws Ref. 11403118

Material: Aluminum



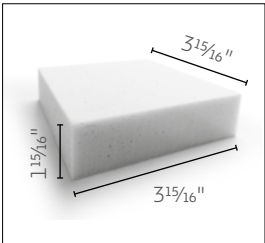
One Box splice plate

Material: Iron
Includes 4 set screws (DIN 913 M4x4).



⚠ Two plates must be used for every joint on the settings number 1, 2, 4 and 5.

Acoustic insulating foam



Flame retardant material

C-S2, d0	DIN EN 13501-1
----------	----------------

Sound Absorption Coefficient

99% for f-2000Hz according
EN-ISO 354



ONE BOX
WITH ROLLER SHADE

BANDALUX