



Z-BOX SOLAR

TECHNICAL INFORMATION

- New Z-Box Solar, the motorised roller shade with a robust cassette resistant to wind and other adverse weather conditions, thanks to its zip system and its fabrication with materials designed to resist outdoor use (cassette, guides and covers in aluminium, stainless steel screws and high-strength plastic caps).
- Comes equipped with a solar panel, a battery and a motor that runs entirely on renewable solar energy, no electrical installation required.

Z-BOX SOLAR

ROLLER SHADE ZIP* WITH CASSETTE AND BUILT-IN SOLAR PANEL

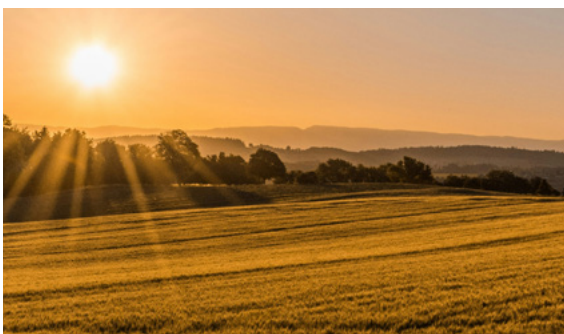
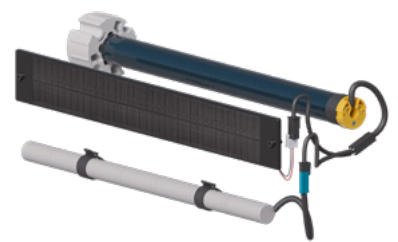


* The zipper guide system keeps the fabric from slipping out of the guides.

No electrical installation

No electrical installation required. The **solar panel** charges the motor battery using sunlight, eliminating the need for electrical wiring for a **100% autonomous** shade.

Save time and money with quick, easy installation – no electrical channels required.



100% sustainable renewable energy

Our system includes a solar panel, battery, and motor that runs on **renewable solar energy**.

Outdoor shade

Optimize battery recharging by avoiding shaded areas near the solar panel. Keep the **photovoltaic cells** clear of obstructions for efficient performance.



Autonomous motorized shades

The available **motors** are **rechargeable** and operate wirelessly with **radio frequency technology**.

Upon initial delivery of the Z-Box Solar, Bandalux will deliver the motor battery fully charged (to be recharged at a later date).

Optimal cable management

Bandalux's innovative cable management system keeps **cables** neatly **organized** inside the box.

In this way, the connected cables are properly positioned and arranged.



Rechargeable battery inside the cassette

The **cassette** is **accessible** and houses the rechargeable battery for **easy access** during replacement or maintenance.

Resistance and reliability

Bandalux-designed end pieces have robust metal shafts.

The support incorporates high precision bearings for **smooth, quiet operation** and perfectly concentric rotation.



Z-BOX SOLAR

ROLLER SHADE ZIP* WITH CASSETTE AND BUILT-IN SOLAR PANEL



Wind resistance shade

Its **zipper guide system** delivers secure fabric attachment that can **withstand extreme wind speeds**.

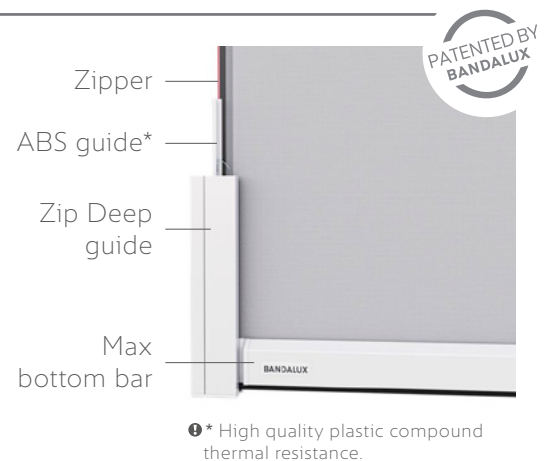
The Z-Box Solar shade has achieved the highest rating, Class 6, according to the EN13561 standard certified by an external and independent laboratory. Z-Box Solar surpasses expectations by withstanding **wind speeds of up to three times (265 km/h) the Class 6 standard** for a 2000 x 2000 mm shade in test conditions, demonstrating its exceptional durability and reliability.

Zip Deep and Max bottom bar zipper system

Our Zip Deep guide offers a more concealed zipper for enhanced light-blocking capabilities with blackout fabrics.

The Bandalux patented stainless steel spring system guarantees **fabric tautness and wind resistance**.

The new Max bottom bar further improves fabric drape, tautness and tension for optimized performance, even with narrow shades.



Self-supporting system

Zip Deep guides, installed frontally or laterally, mean that the box does not require an installation support, as it rests on the guide (which supports its weight).

EcoAttitude for a better future

We design and manufacture our products with the **well-being of the planet** in mind.

We add value with innovative solutions for the environment, using **renewable energy**, manufactured in a conscious way and with the main focus on building a **sustainable future** for new generations.



Available fabrics

- Polyscreen® 351*, Polyscreen® 550*, Polyscreen® 550 Airpure®* and Polyscreen® 650.
- Mega BO, Mega BO Airpure®*, Trend and Trend Light.
- Insect screen.

❗ * Check available colors.



Maximum opacity

This guided shade with a zipper provides a shade that has no gap* between the fabric and the guide, a system that offers maximum opacity when combined with fabrics from Bandalux's **blackout range**.

❗ * Free space between the fabric and guide.



Maximum visibility

Also available with insect screen fabric, a fabric that has a **wide degree of openness**, offering **great visibility** in the area where it is installed. In addition, you will be able to insulate your home from insects in the most effective way.



Airpure®

The Bandalux Airpure® shade incorporates technology that purifies the air. This innovation is based on the application of nano-coating on the shade fabric, which **removes any pollutant particles from the air**.

These shades are ideal for any room where you want to enjoy a **healthier environment**, especially in healthcare environments, educational centers and spaces where people with allergies and respiratory problems live.

You can add Airpure® to your Z-Box Solar with Mega BO Airpure® and Polyscreen® 550 Airpure® fabrics.

More info.
AIRPURE®

BANDALUX
airPURE®
BLINDS & SHADES

Z-BOX SOLAR

TECHNICAL DATA



**OUTDOOR
INSTALLATION**

MAXIMUM WIDTH
5600 mm

MAXIMUM HEIGHT
3000 mm

MAXIMUM SURFACE
16,8 m²

Profile colors available



White
RAL 9016



Anthracite
RAL 7016



Metallic
Grey



Grey
RAL 9006



Black
RAL 9011

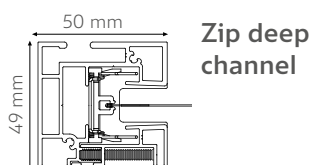
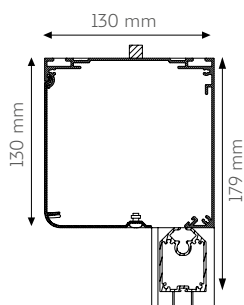
❶ By default, Bandalux will provide the products in white, unless a different color is specified on the order form or eBa.

Operating systems

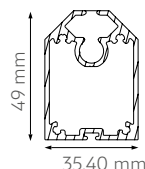


Solar Motor

Cassette, side guides, bottom bar and retraction heights dimensions



Zip deep
channel



Max
bottom bar

Motorized options

Operating systems	Motor	Voltage (V)	ø mm	Nm	r.p.m	Power (W)	Amparage (A)	Minimum shade width (mm)
BANDALUX RADIO SOLAR MOTOR KIT	Solar Kit Radio 40 6/16	12	40	6	16	36	3,00	700
	Solar Kit Radio 40 10/12	12	40	10	12	36	3,00	700
	Solar Kit Radio 50 20/16 ⁽¹⁾	12	50	20	16	72	6,00	700
SOMFY® RTS SOLAR MOTOR KIT	Solar Kit Sunea 40 RTS 6/18	12	40	6	18	24	2,00	700
	Solar Kit Sunea 40 RTS 10/12	12	40	10	12	32	2,67	700
SOMFY® IO SOLAR MOTOR KIT	Solar Kit IO 50 20/12 ⁽¹⁾	12	50	20	12	74	4,40	700

❶ (1) Required for shades with measurements exceeding 3200 mm wide. / For safety reasons, it is recommended to use a wind sensor with outdoor shades. For sizes larger than 9 m² it is essential to install a sensor.

Automatisms

Automatisms	Single-channel remote control	Multi-channel remote control
BANDALUX RADIO SOLAR MOTOR KIT	1 channel Sensor transmitter Ref. 06700073	5 channel Sensor transmitter Ref. 06700074
SOMFY® RTS SOLAR MOTOR KIT	Situo 1 RTS Pure Ref. 06700970C	Situo 5 RTS Pure Ref. 06700881C
SOMFY® IO SOLAR MOTOR KIT	Situo 1 IO Pure Ref. 06700620B	Situo 5 IO Pure Ref. 06700625B

Reinforced brackets (optional)



Ceiling installation

❶ Brackets are visible and include fastening bolt.



Wall installation

❶ Brackets are visible and include fastening bolt./ Incompatible with frontally installed channels.



Adjustment wedge Kit

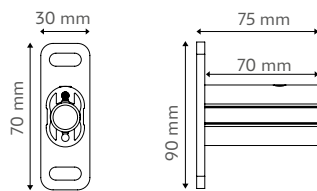
Reinforcement pieces placed between the guide and the wall to compensate irregularities and inclination.

❶ Bandalux will provide 3 units by default.

Channel spacers



Channel spacer bracket



Height of shade H	No. brackets per channel
$H \leq 1500 \text{ mm}$	2
$1500 \text{ mm} < H \leq 2500 \text{ mm}$	3
$2500 \text{ mm} < H \leq 3000 \text{ mm}$	4

Collection Airpure®



Airpure® Shades:

- Collection Polyscreen® 550 Airpure® in the following colors: Ash, Pearl and White.
- Collection Mega BO Airpure® in the following colors: Alabaster, Black, Dark Grey and White.



BANDALUX

